

MMUN/CUN  
CANCUN INTL

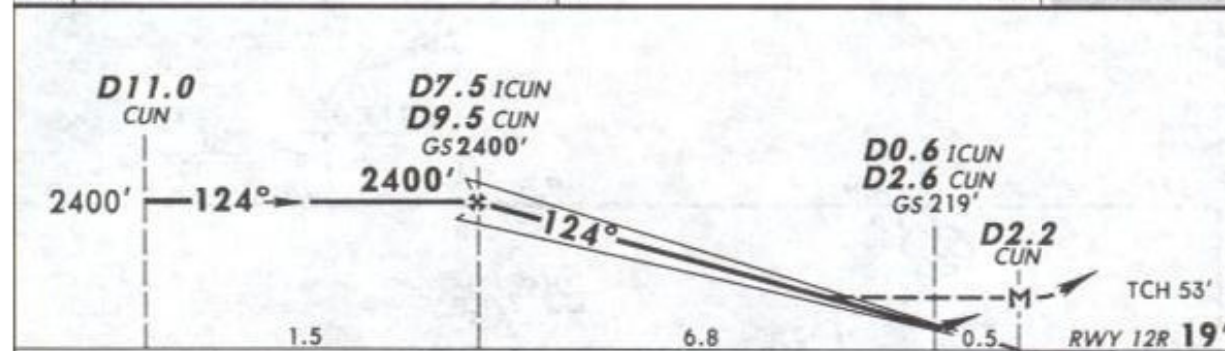
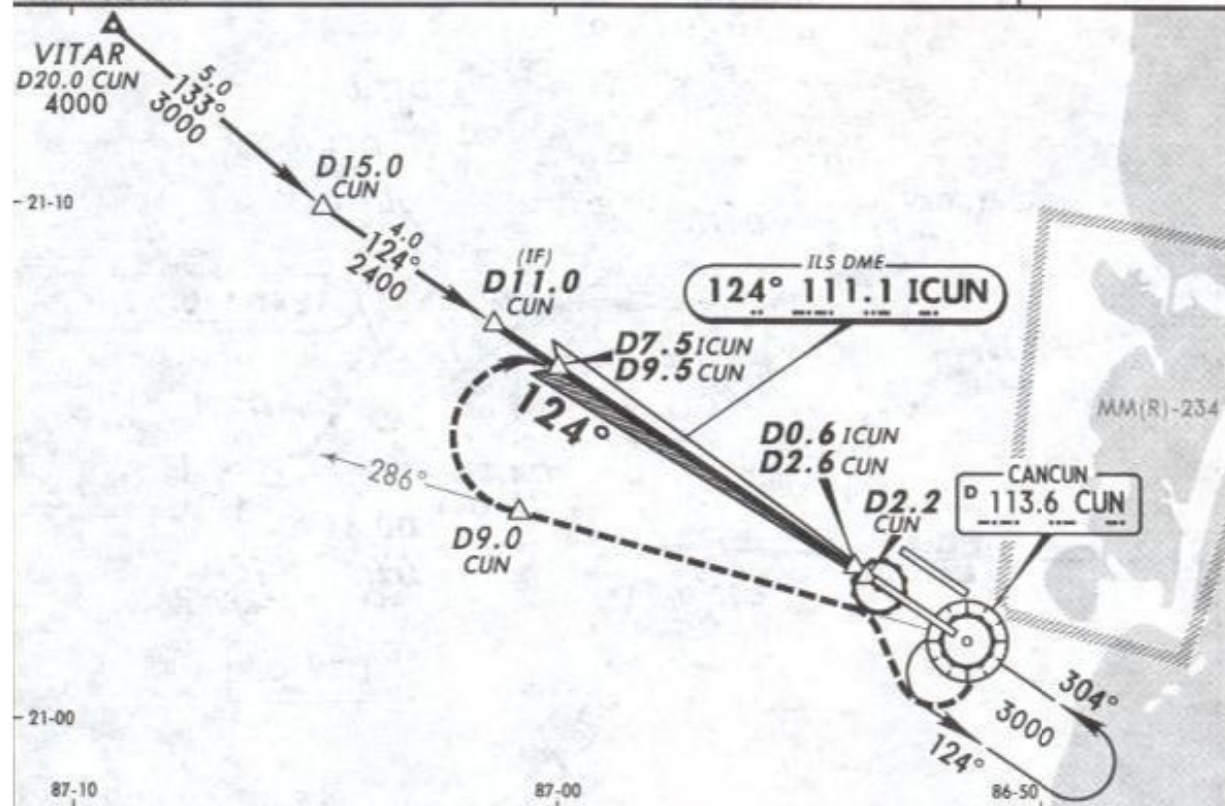
13 NOV 09

(11-4)

ILS DME or LOC 1 Rwy 12R

CANCUN, MEXICO

*ATIS 127.7	*CANCUN Approach (R) 121.1	CANCUN Arrival 123.2	CANCUN Tower 118.6	*Ground 121.7
LOC 1CUN 111.1	Final Apch Crs 124°	GS D7.5 1CUN D9.5 CUN 2400' (2381')	ILS DA(H) (CONDITIONAL) 219' (200')	Apt Elev 20' Rwy 12R 19'
<p>MISSED APCH: RIGHT turn to intercept CUN VOR R-286 outbound to D9.0 CUN, then turn RIGHT to intercept CUN VOR R-304 inbound at D9.5 CUN to CUN VOR to the minimum holding altitude.</p> <p>Alt Set: MB (IN on req) Rwy Elev: 1 MB Trans level: FL 195 Trans alt: 18500' 1. DME/ILS usable with DME equipped aircraft with accurate instrument reading within 0.2 NM.</p>				
				2000'
				MSA CUN VOR



Gnd speed-Kts	70	90	100	120	140	160	ALS	REIL	PAPI	RT	CUN 113.6 to D9.0 R-286 CUN
GS	3.00°	377	484	538	646	753	861				
MAP at D2.2 CUN											

STRAIGHT-IN LANDING RWY 12R				CIRCLE-TO-LAND			
ILS		LOC (GS out)		Not Authorized Northeast of Rwy 12R/30L			
DA(H) 219' (200')		MDA(H) 420' (401')					
FULL	ALS out		ALS out	Max Kts	MDA(H)		
A				90	480' (460') - 1		
B				120			
C	1/2	3/4		140	480' (460') - 1 1/2		
D			1	165	580' (560') - 2		
ALL Non Skd	DA(H) 271' (252')	1 1/4	1 1/2				